

Three year Mental
Health Inpatient
Services plan
Frimley ICB

August 2024



Frimley
Integrated Care Board

Three year Mental Health Inpatient Services plan

Vision

“We aspire to co-produce Mental Health pathways and services that meet the needs of the Learning Disabilities & Autism and Mental Health inpatient service users and their Carers within the Frimley population.

Establish services based on principles of hope and recovery with a needs-led therapeutic approach at all stages.

Continue to support people to recover control of their lives. Provide suitable wrap around care, building on lived experience within our community”

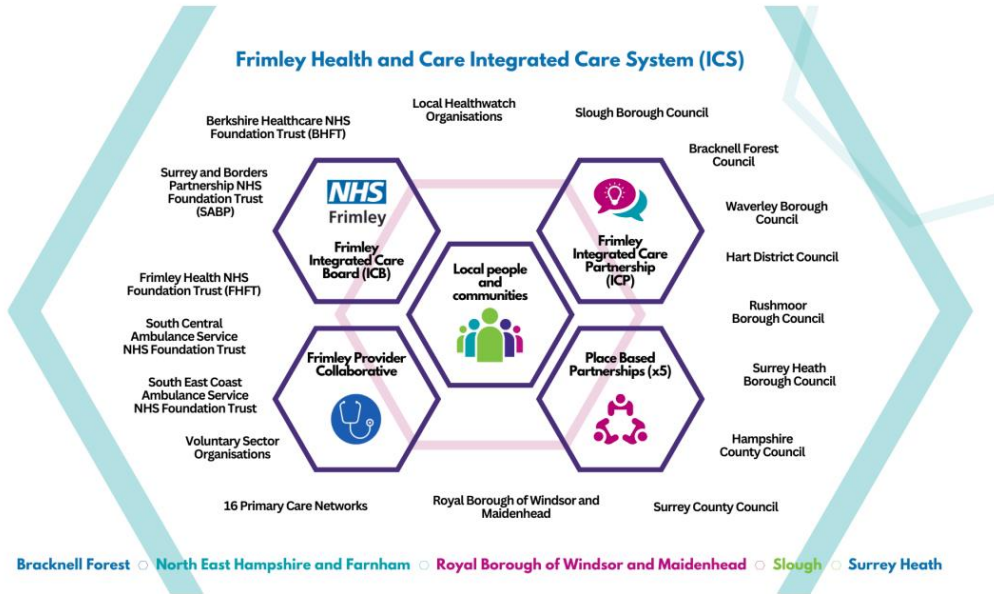


Delivering in collaboration

Frimley Health and Care


We work with many public service partners in our Frimley localities

NHS
 Frimley



We work closely with Surrey Heartlands Integrated Care Board (ICB) and the Buckinghamshire, Oxfordshire and Berkshire West (BOB) ICB to co-design and provide suitable Mental Health Inpatient provision.



Mental Health Inpatient Service funding is provided to BOB ICB to contract for the East Berkshire beds and community provision, and funding is provided to Surrey Heartland as lead commissioners for the North East Surrey and Borders Partnership (SABP) beds and community provision.

Mental Health Inpatient Services 3 Year Plan

PHASE 1

Governance

- Affirm Frimley ICB internal governance for MHIP programme
- Affirm Frimley ICB internal capacity for MHIP programme
- Stakeholder analysis for engagement and collaboration phase
- Align governance and work with BOB ICB to maximise delivery and shared learning
- Align governance and work with Surrey Heartlands ICB to maximise delivery and shared learning

Collaboration & Initial delivery

- Develop detailed plans through co-production with people with lived experience of services and those who deliver services
- Agree quality, patient and staff experience and clinical outcomes measures,
- Agree core set indicators to track the success deliverables
- Where appropriate agree lead test approaches across 3 ICB to maximise learning opportunities

PHASE 2

Delivery, Initial Review & Refresh

- Review and refresh of year 1 delivery
- Deliver further measurable change in Year 2 to pathways relating to:
 - Transition into adult services
 - Before admission
 - During Admission
 - After Admission
- Embed and monitor changes with stakeholders at pathway level

PHASE 3

Review & Refresh

- Carry out formal review of changes with stakeholders across plan
- Share learning and embed in other pathways where appropriate
- Review priorities and allocation of resources for the programme
- Revisit collaboration stage and refresh plans for remainder of programme
- Ensure commissioning contracts and relevant planning is in place

Measures of Success

Measures of Success for Frimley Mental Health Inpatients that will be monitored are:

Cross cutting deliverables:

1. No 'locked rehab' inpatient services to be commissioned
2. Reducing the length of stay and associated actions
3. Reducing to zero the number of out of area placements (OoAPs)
4. Increase access to community services designed to avoid unnecessary admission to hospital
5. Local evidence-based service models that promote needs-based care
6. The experience and outcomes of people who use our services and their carers (including physical health) is improved.

LD and A specific deliverables:

7. Reasonable adjustments in place to ensure appropriate access to services when needed, especially for people with a learning disability and autistic people
8. Represented in co-production, feedback of lived experience is captured to shape needs based care
9. Implementation of a needs-led Dynamic Support Register (DSR) to enable people on the waiting list of autism assessment to access the appropriate support, or people who have opted not to have a formal diagnostic assessment.

Due to the level of interdependency with the BOB and Surrey Heartlands plans, it is relevant to review the respective measures proposed in the plans of those ICBs during Year 1 of the plan.