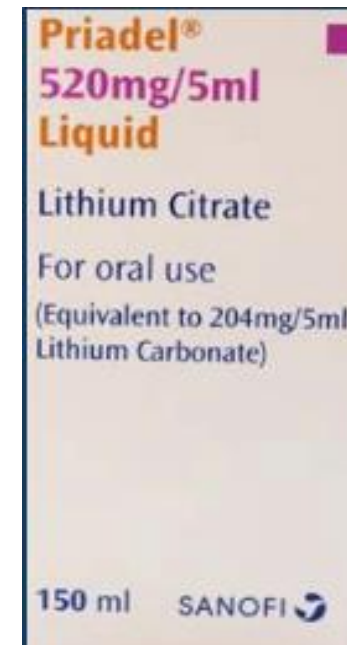
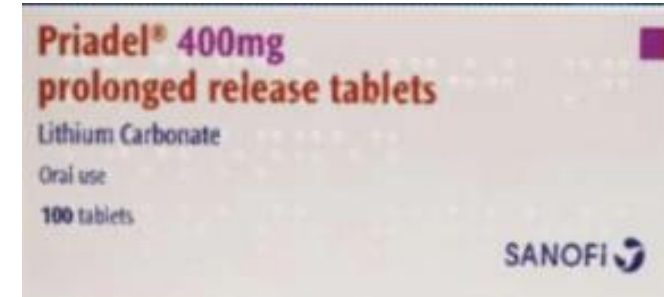





A patient on Priadel® MR tablets 1.2g daily with swallowing difficulties is to be switched to equivalent dose of Priadel® liquid


Question: What dose of Priadel® liquid should be prescribed?






Answer: Priadel liquid 15mL twice a day

 2 different salts of lithium are available: lithium **carbonate** (Plain and MR tablets only) Priadel[®] Camcolit[®] Liskonium[®] and lithium **citrate** (liquid only) Priadel[®] 520 mg/5mL and Li-Liquid[®] 509 mg/5mL and 1.018g/5mL.

 **These salts are not equivalent** and a conversion calculation is required when switching preparations.

 Each 5mL of Priadel[®] liquid contains 520mg of lithium citrate which is equivalent to 204mg of lithium carbonate.

Priadel [®] tablets	200mg daily	400mg daily	600mg daily	800mg daily	1g daily	1.2 g daily	1.4g daily
Priadel [®] liquid	5mL daily	10mL daily	15mL daily	20mL daily	25mL daily	30mL daily	35mL daily
Prescribe liquid dose as:	2.5mL twice daily	5mL twice daily	7.5mL twice daily	10mL twice daily	12.5mL twice daily	15mL twice daily	17.5mL twice daily

Prescribe lithium in divided doses until levels are stabilised. Ongoing, once daily is preferable. Monitor plasma levels when switching preparations.

When switching formulations or brands, seek specialist advice.